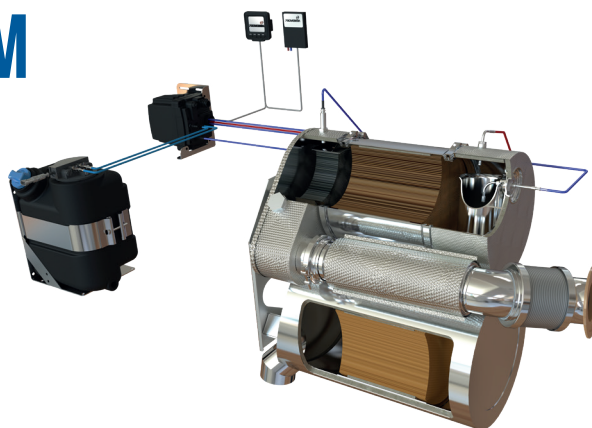


NOxBUSTER® EXHAUST AFTERTREATMENT SYSTEM

Features

- NO_x and particulate emissions reductions
- Vehicle specific and universal modular models
- Compact and inline models available
- Patented AdBlue mixing
- Uses standard AdBlue
- 1 year warranty



Input

Voltage	24V
Pressurised air	6–12 bar / 20 ltr./min
Quality	ISO 8573 class 2 for dew point, class 3 for other properties
AdBlue	ISO 22241-1 or DIN 70070

Engine application

Power	50–383 kW
Displacement	4–16 ltr.
Exhaust gas temperature	
Average min.	200°C
Maximum	550°C
Smoke opacity	0,8 1/m

Operation range

Temperture environment	< 45°C
AdBlue temp.	< 65°C
Backpressure max.	250 mbar

Emissions reductions

NO _x	> 80%
PM	> 80%
PN	< 8×10 ¹⁰

Sensors

Temperature	1 pcs
NO _x	2 pcs
Backpressure	1 pcs

Catalysts

DOC	metallic with PM coating
DPF	SiC or Cordierite with PM coating
SCR	V-SCR

Optional features

- AdBlue tank (14–70 ltr.)
- Heated AdBlue lines for sub. -5°C operation
- Driver display
- PROCARE Drive telemetry
- NOxBUSTER® Service Tool for service and diagnostics

